

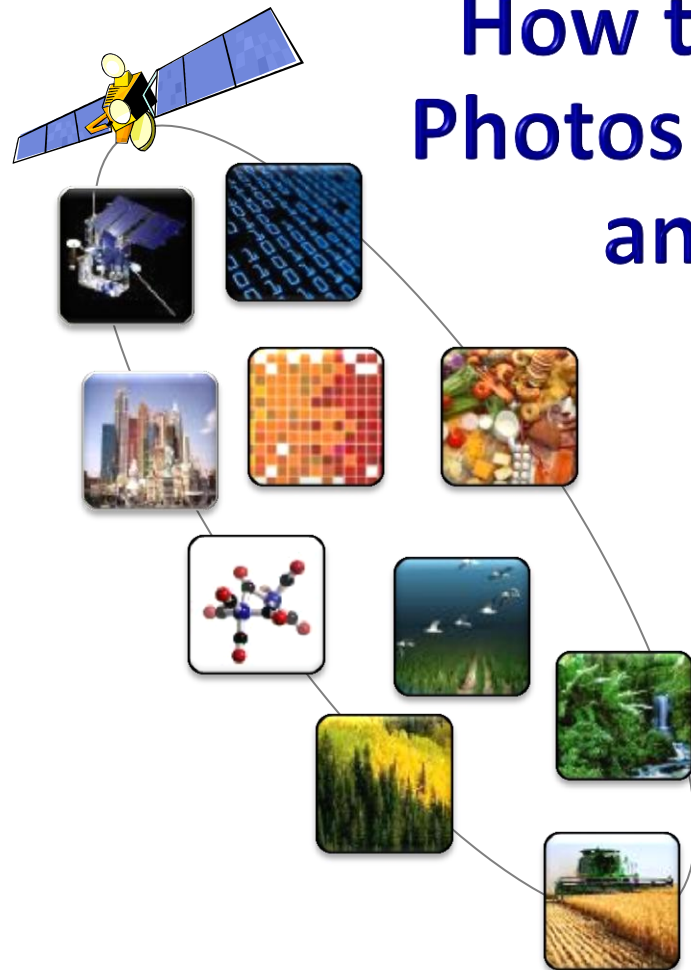


How to Take Geo-Referenced Field Photos for Monitoring Water Quality and Harmful Algal Blooms”

Bridging the Gap

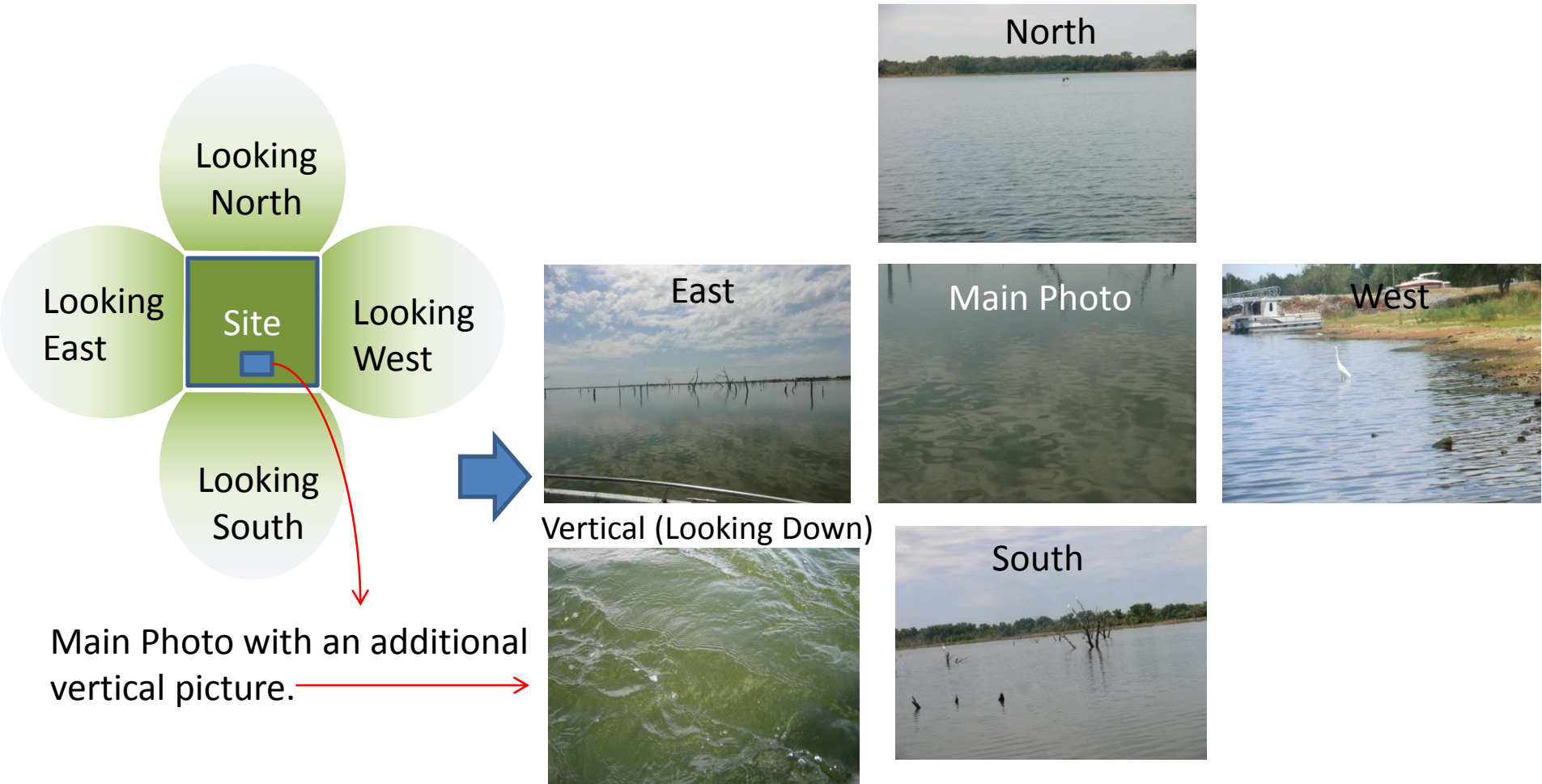
Connecting Citizen Science ↔ Earth Observation

www.eomf.ou.edu/photos



How to take field photos as ground truth data?

Taking one picture looking the at the center of the site/area of interest will be sufficient. However having few additional photos around the core site as shown below will give an idea about the intensity, manganite and spatial spread.



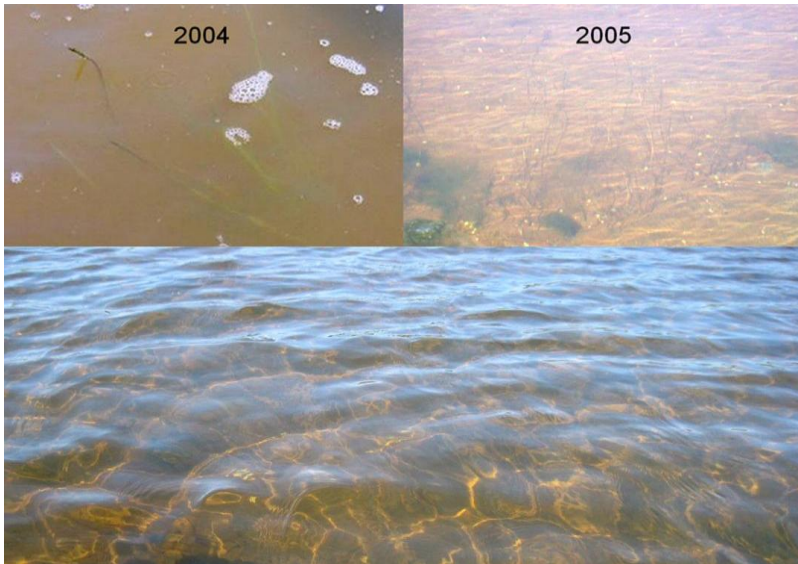
Some example photos for Water Quality



Industrial pollution (pc: thewaterq.com)



Eutrophication



Monitoring of water clarity (pc: nps.org)



Sedimentation

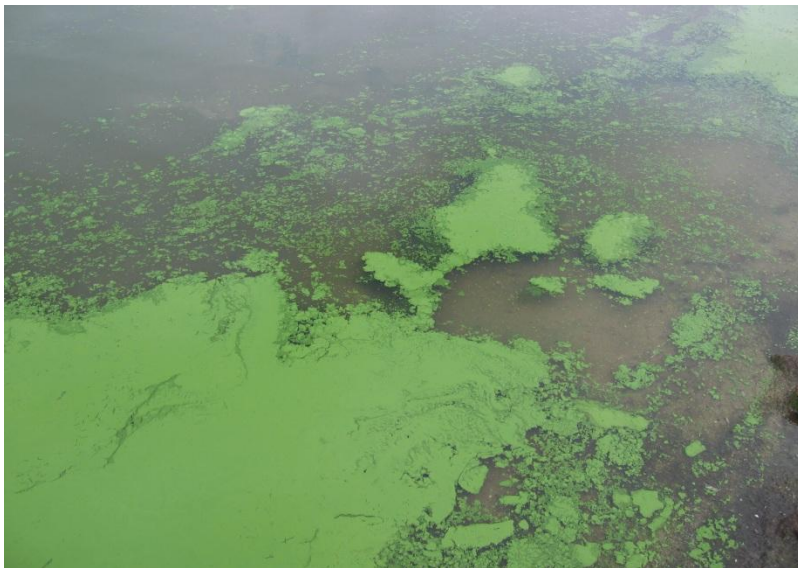
Some example photos for Harmful Algal Blooms



Algal blooms (pc: water.me.vccs.edu)



Swamp forest with algae



Harmful algal blooms (pc: Graham, USGS)



Highly toxic algal blooms (pc: thestickytongue.org)